

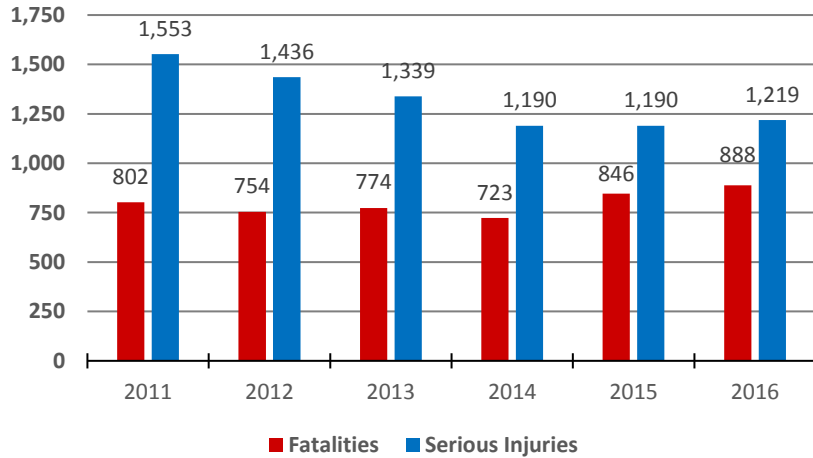


# FLORIDA'S IMPAIRED DRIVING PROBLEM

## WHY A FOCUS ON IMPAIRED DRIVING?

Despite impressive efforts to reduce traffic-related fatalities and serious injuries in Florida, alcohol- and drug-involved crashes continue to be a barrier to reaching our goal of zero fatalities on our roadways. In 2016, 888 people died on Florida's roadways in impaired driving crashes and over 1,200 were seriously injured.

### Impaired Driving (2011-2016)



The Florida Impaired Driving Coalition (FIDC) was formed in 2009 to identify and prioritize the state's most pressing impaired driving issues and develop a strategic plan to maximize the State's ability to impact these crashes. FIDC members have a working knowledge and understanding of the various parts of Florida's impaired driving system and how the parts interrelate.

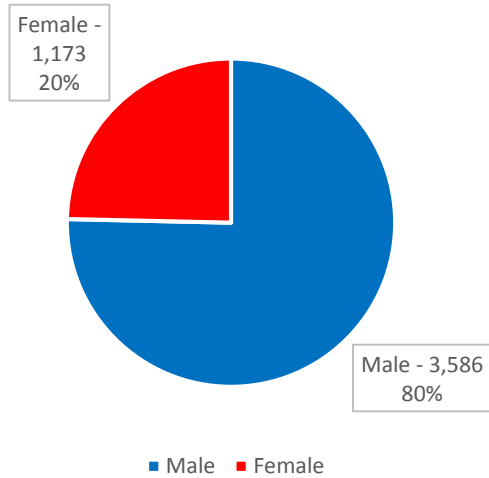
The Florida Impaired Driving Strategic Plan (IDSP) identifies six key areas where the Coalition will focus their efforts over the next five years, including the following:

- Program Management and Strategic Planning;
- Prevention;
- Criminal Justice System;
- Communication;
- Screening, Assessment, Treatment, and Rehabilitation System; and
- Program Evaluation.

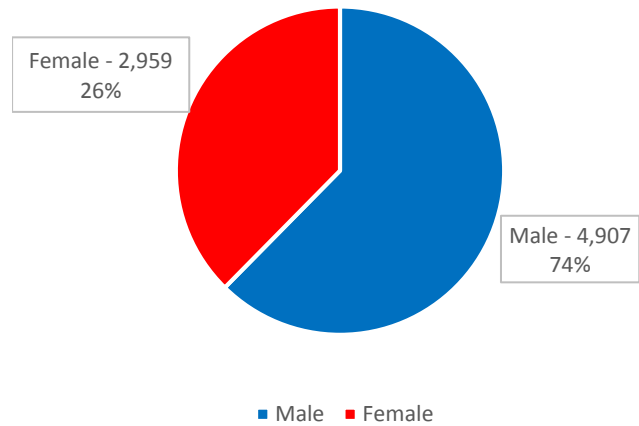
## Florida Impaired Driving Coalition Members

- DUI Counterattack, Hillsborough, Inc.
- Florida Association of State Prosecutors
- Florida Dept. of Business and Professional Regulation
- Florida Dept. of Highway Safety and Motor Vehicles
- Florida Dept. of Law Enforcement, Alcohol Testing Program
- Florida Dept. of Transportation
- Florida Highway Patrol
- Florida Police Chiefs Association
- Florida Safety Council
- Florida Sheriff's Association
- International Association of Chiefs of Police
- Lake Alfred Police Department
- Mothers Against Drunk Driving (MADD)
- Seminole Tribe
- State Attorney's Office 17th Judicial Circuit
- Students Against Destructive Decisions (SADD)
- Tallahassee Community College, Florida Public Safety Institute
- Trial Court Judge
- University of Miami, Division of Toxicology
- University of North Florida, Institute of Police Technology and Management

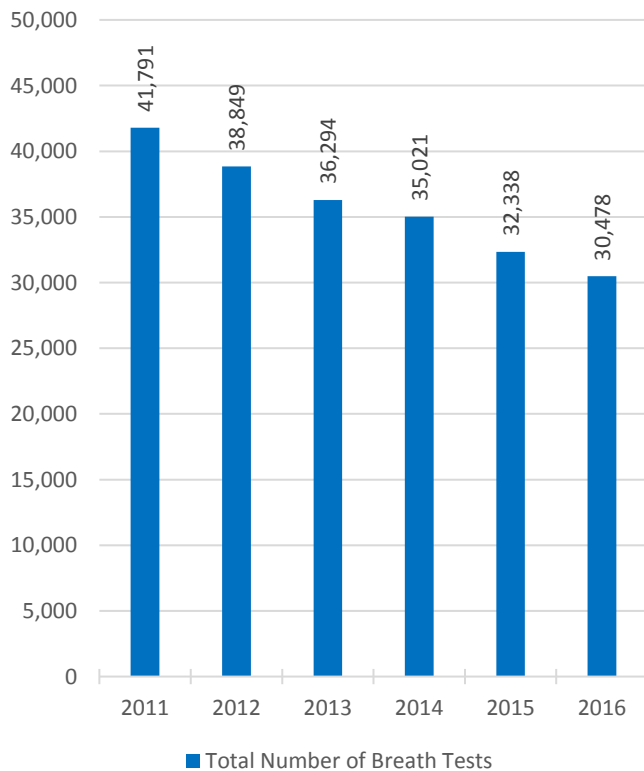
Impaired Driving Fatalities  
Drivers and Passengers  
(2011-2016)



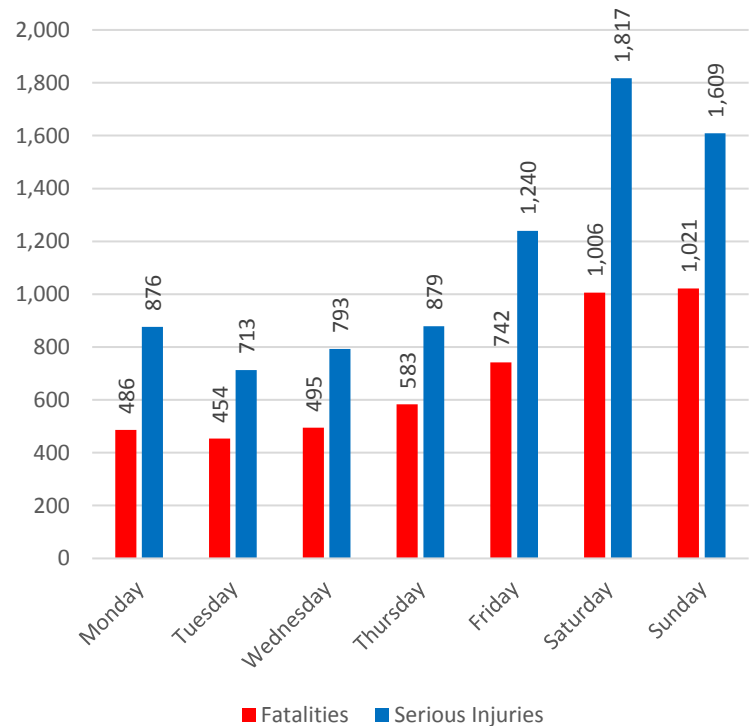
Impaired Driving Serious Injuries  
Drivers and Passengers  
(2011-2016)



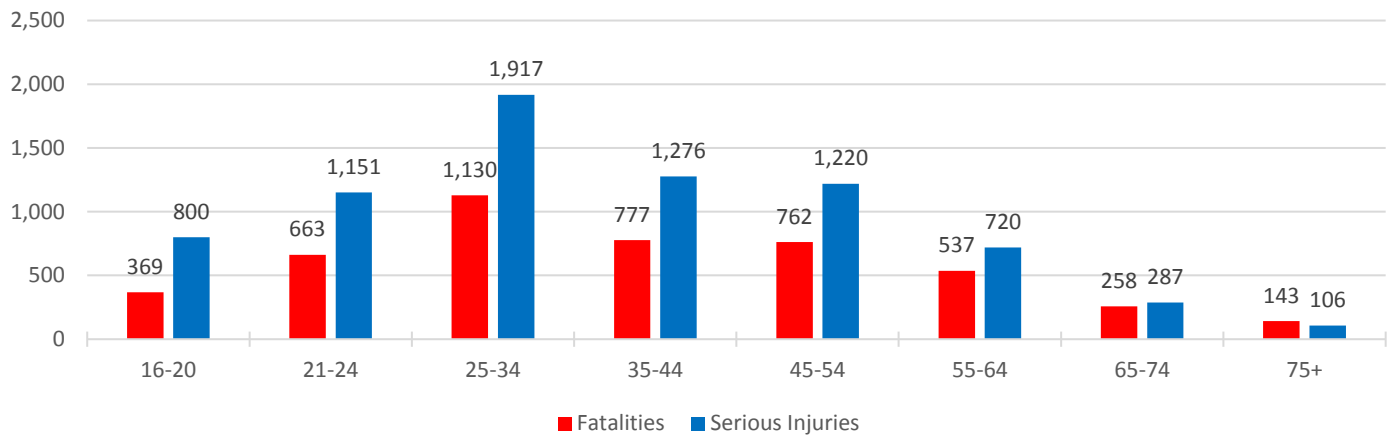
Total Number of Breath Tests  
(using Intoxilyzer 8000, 2011-2016)



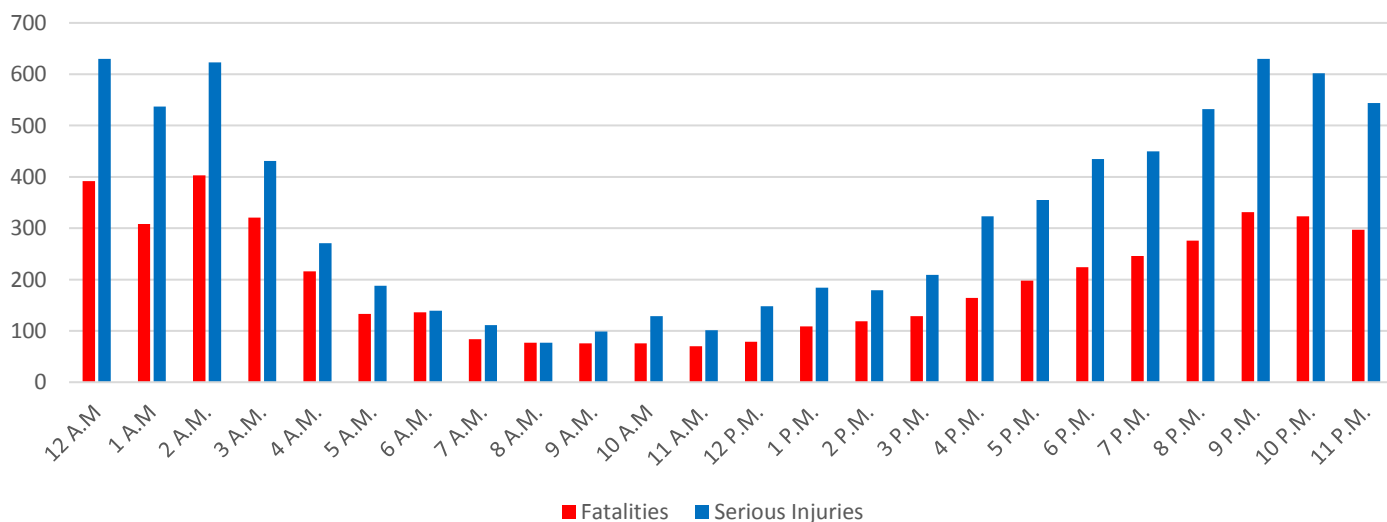
Impaired Driving Fatalities and Serious Injuries  
by Day of Week  
(Drivers and Passengers, 2011-2016)



Impaired Driving Fatalities and Serious Injuries by Age  
(Drivers and Passengers, 2011-2016)



Impaired Driving Fatalities and Serious Injuries by Time of Day  
(Drivers and Passengers, 2011-2016)



## ATTACKING THE PROBLEM

The FIDC members and their agencies or associations, are working to implement the following strategies to reduce impaired driving and its consequences in Florida.

### *Program Management and Strategic Planning*

- Expand Impaired Driving Coalition membership to include key partners.

### *Prevention*

- Identify and share model laws that would make over-service of individuals grounds for license action.
- Promote Community Traffic Safety Teams to develop and implement strategies to address impaired driving.

### *Criminal Justice System*

- Identify and share model laws that would increase the existing penalties for chemical test refusals.
- Support codification of a uniform statewide impaired driving diversion program.
- Review proposed and new legislation for compliance with the impaired driving components of the FAST Act.
- Support a process to link the citation to the impaired driving court case.
- Ensure the accuracy of toxicology labs that meet minimum recommendations for the toxicological investigation of suspected drug-impaired driving cases.
- Identify and share model laws that would improve the existing process for requesting blood draws to test for impaired driving.

### *Communication Plan*

- Develop a comprehensive multi-pronged approach to communicate to the public and impaired driving stakeholders the importance of driving sober.

### *Screening, Assessment, Treatment, and Rehabilitation System*

- Develop and share guidelines for a standard DUI program for Florida.
- Develop and share recommendations to remove barriers that prevent impaired drivers from seeking treatment.

### *Program Evaluation*

- Support the Florida Traffic Safety Information System Strategic Plan to address the need for data linkages and integration, data dictionaries, and data formats for various data files used to address highway safety issues including impaired driving crashes, fatalities, and injuries.
- Identify and share strategies to streamline electronic reporting methods.
- Identify the impact of Florida's DUI Diversion Programs on impaired driving arrests.
- Track law enforcement training related to impaired driving.

*For more information visit:*

[www.flimpaireddriving.com](http://www.flimpaireddriving.com)